



# Annual Heat Storage Meeting Updates

28. October 2020

**GSE Lining Technology GmbH | A SOLMAX Company**

DIPL.-ING. CATRIN TARNOWSKI | SENIOR TECHNICAL MANAGER

DIPL.-ING. THOMAS LABDA | TECHNICAL SALES MANAGER

# SOLMAX WORLDWIDE

 HEADQUARTER  
VARENNES, QC | CANADA

BOEKER STRASSE  
RECHLIN | GERMANY



NORMANNENWEG  
HAMBURG | GERMANY



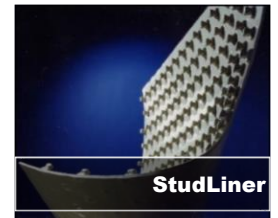
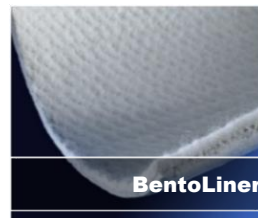
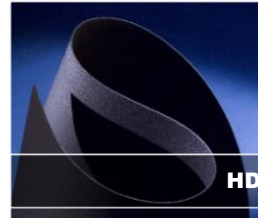
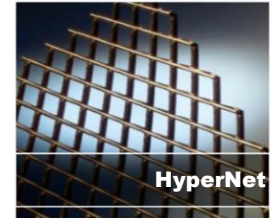
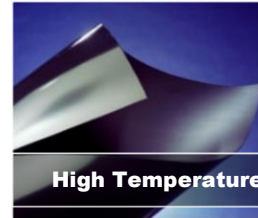
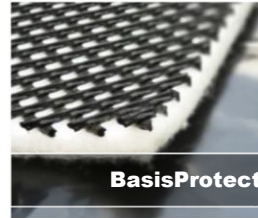
# SOLMAX PRODUCTS

## PIT THERMAL ENERGY STORAGE

- PIT LINING
- FLOATING COVER
- VERTICAL BARRIERS
- CONCRETE CONNECTIONS

## PRODUCTS

- BasisProtect
- High Temperature Liner
- HyperNet
- HD Liner
- FabriNet
- Color Liner
- BentoLiner
- CurtainWall
- StudLiner



# SOLMAX SERVICES

## PIT THERMAL ENERGY STORAGE



### SERVICES

- Products sales
- Design consulting
- Construction planning
- Prefabrication
- Installation
- Services



# SOLMAX REFERENCES

## PIT THERMAL ENERGY STORAGE



\*High Performance geomembrane/without Installation

\*\*without Installation



# SOLMAX UPDATES



## High Temperature Liner - Testing

- Immersion tests for Arrhenius modelling for different product types
- Test Results from Project

### Gram FJERNVARME

sample below floating cover – 4 years exposure

Physical Property	Test Method	Test Results	Unit
initial HPOIT	ASTM D 5885	1418	min
HPOIT - cross section	ASTM D 5885	293 / 793	min
HPOIT - middle layer	ASTM D 5885	290 / 855	min
initial OIT	ASTM D 3895	266	min
OIT – 200°C cross section	ASTM D 3895	23	min
OIT – 200°C - middle layer	ASTM D 3895	32	min
NCTL	ASTM D 5397	228 / 228 / 239 / 241 / 247	h

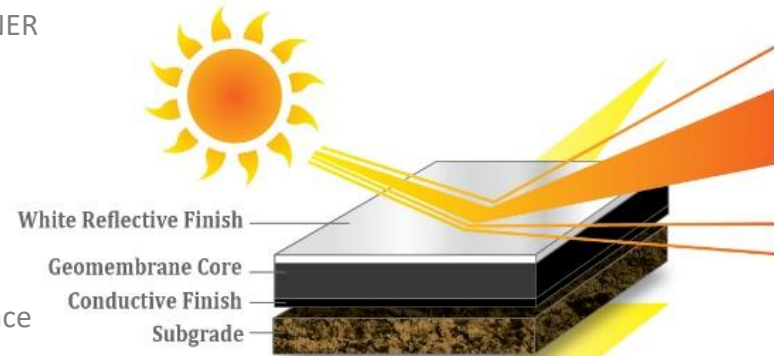


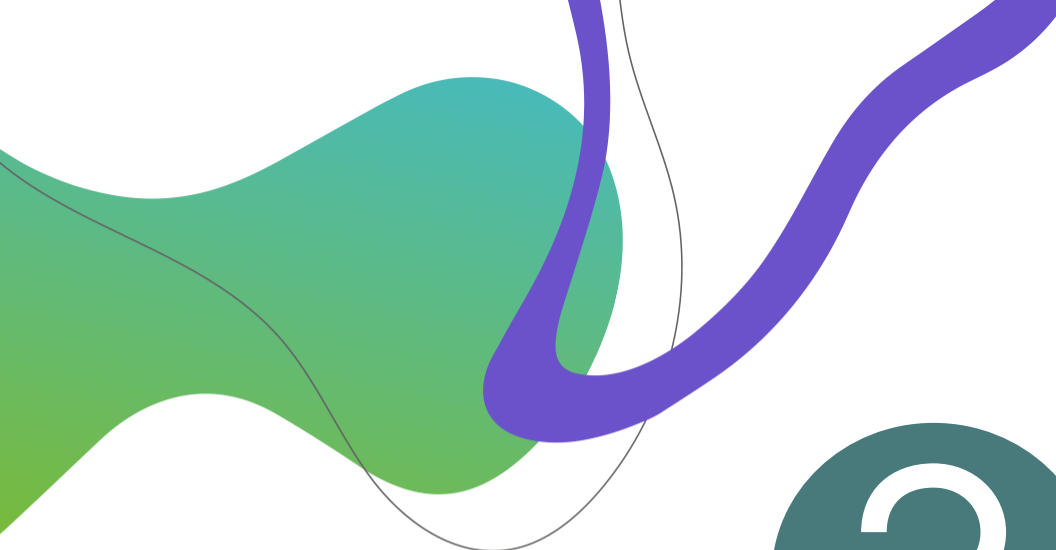
# SOLMAX UPDATES



## High Temperature Liner - 2nd Generation

- HIGH TEMPERATURE LINER with > 3.0 mm thickness
- HIGH TEMPERATURE CONCRETE PROTECTION LINER
- HIGH TEMPERATURE LINER with White Surface
- White Reflective Finish
  - Allows visual inspection
  - Reduces wrinkling during installation
- HIGH TEMPERATURE LINER with conductive surface
- Conductive Finish
  - Allows electrical leak location  
(after construction, in service, permanent)





QUESTIONS?



GSE LINING TECHNOLOGY GMBH | A SOLMAX COMPANY  
NORMANNENWEG 28, 20537 HAMBURG | GERMANY



CTARNOWSKI@SOLMAX.COM  
TLABDA@SOLMAX.COM